

## Tip Sheet for using the Getty Image Library Guest Preview

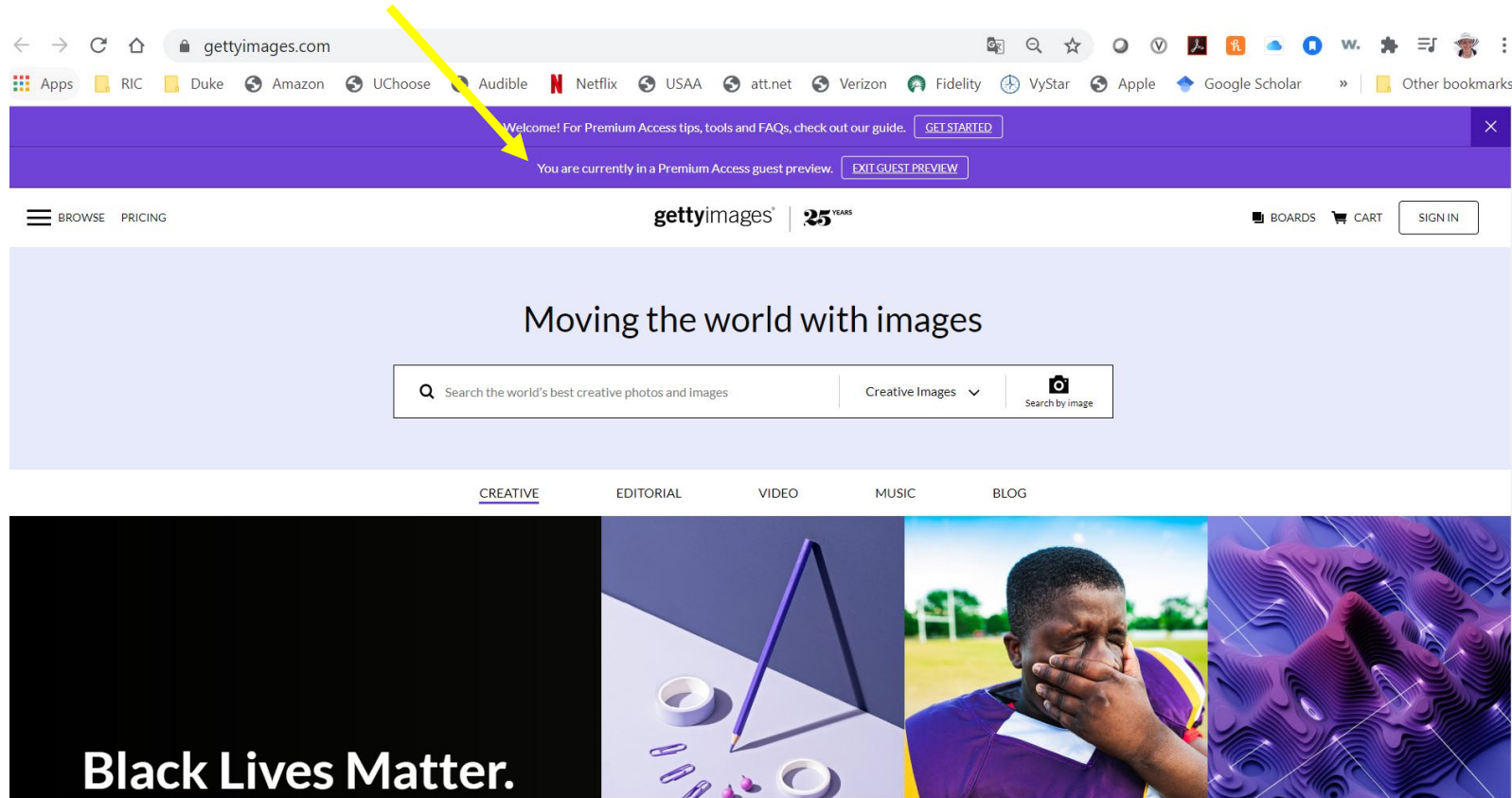
### Requesting Images from the Getty Library:

Please use this link to submit your request: <https://redcap.duke.edu/redcap/surveys/?s=48PA38PRFW>

### Getting Started

When you open the link: <https://www.gettyimages.com/landing/pa-preview/expanded/42192>

DO NOT exit out of the Guest Preview



### Searching for images:

From the homepage, you can click through Creative, Editorial, and Video to find the content you're looking for. Or, you can use keywords to find images related to what you're looking for.

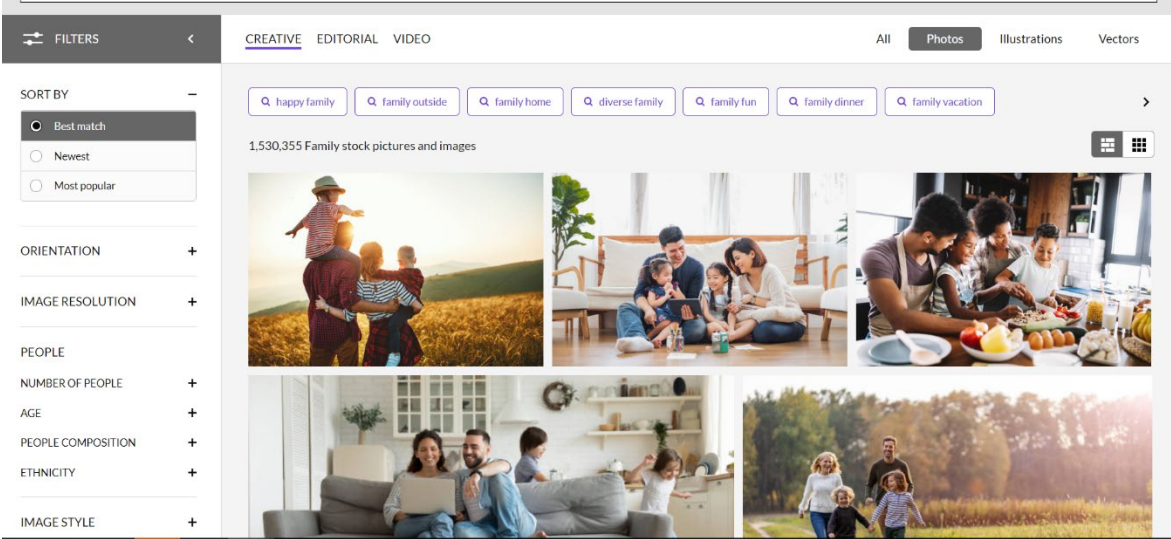
Tip Sheet for using the Getty Image Library Guest Preview

Refine your results with filters from the left hand of the page.

Selecting Images

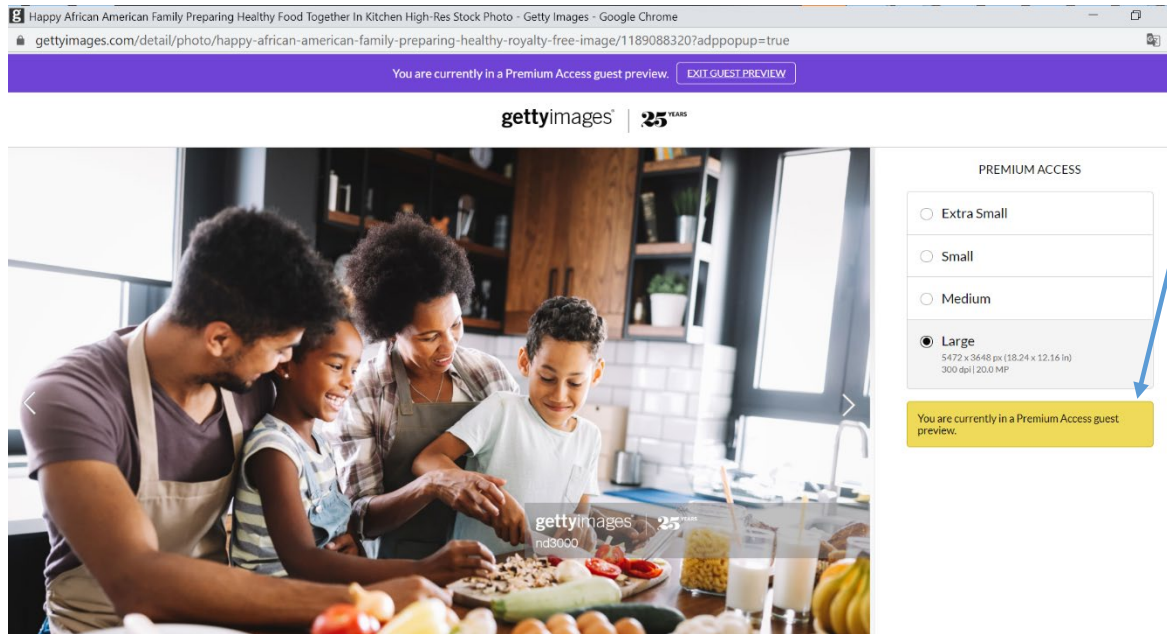
When you find images you would like to use, you have two options for gathering information about them:

Search: Family (note the options for further filtering your search)



Click the image you like and it will pop open in a new window.

## Tip Sheet for using the Getty Image Library Guest Preview



### Note the following:

We are still in guest preview.

There is no cost listed

*This image is available to you*

You can copy the URL for this image and include it in your submission form.

OR

You can use the number at the end of the URL (in this case, 1189088320) and include it in your submission form.